



seklo



Dr. Feet 
anatomic

Seklo je obiteljska tvrtka sa dugom tradicijom u proizvodnji natikača. Osnovni proizvodni program čine natikače, sandale i klompe. Za naše proizvode koristimo prirodne materijale, dok su potplati izrađeni od poliuretana. Proizvode plasiramo pod svoje tri robne marke: Dr.Feet, Seklo comfort i inGreen. Odlike naših proizvoda su dizajn, udobnost i kvaliteta.



Seklo ist ein Familienunternehmen, eine Firma mit einer langen Tradition in Herstellung von Schuhen. Die Hauptproduktpalette besteht aus Hausschuhen, Sandalen und Clogs. Für unsere Produkte verwenden wir natürliche Materialien, während die Sohlen aus Polyurethan sind. Die Produkte werden unter drei Marken verkauft: Dr. Feet, Seklo Komfort und InGreen. Die Merkmale unserer Produkte sind Design, Komfort und Qualität.

Seklo is a family company with a long tradition in the production of loafers. The main product range consists of slippers, sandals and clogs. For our products we use natural materials, while the soles are made of polyurethane. Products are sold under three brands: Dr.Feet, Seklo comfort and inGreen. The characteristics of our products are design, comfort and quality.



Seklo è un'azienda familiare con una lunga tradizione nella produzione di pantofole. Il programma di produzione base è composto da pantofole, sandali e zoccoli. Per la nostra produzione impieghiamo materiali naturali, mentre le solesono in poliuretano. I nostri prodotti sono venduti con i nostri tre marchi: Dr.Feet, Seklo comfort e inGreen. L'eccellenza dei nostri prodotti sta nel disegno, comodità e qualità.



Carla

ART. 2103S

SIZE: 36-42



COLOR: WHITE



COLOR: NAVY



COLOR: RED



COLOR: BLACK

ART. 2101S

SIZE: 41-47



COLOR: NAVY



COLOR: WHITE



COLOR: BLACK

ART. 2396S

SIZE: 36-42

WITH MASSAGE GEL



COLOR: BLACK



COLOR: NAVY



COLOR: RED



COLOR: WHITE

ART. 2398/6

SIZE: 36-42

WITH MASSAGE GEL



COLOR: LAQ 348



COLOR: HP 048 B



COLOR: HP 42



COLOR: LAQ 445



COLOR: HP 314



COLOR: HP 280



COLOR: HP 292



COLOR: HP 298



COLOR: CTO 25



COLOR: CTO 26



COLOR: HP 338 V2

ART. 2112/6

SIZE: 36-42



COLOR: HP338 V2



COLOR: HP 314



COLOR: HP 280



COLOR: CTO 41



COLOR: CTO 26

ART. 2146/6

SIZE: 36-42



COLOR: HP 048 C



COLOR: HP 314



COLOR: HP 048 B



COLOR: HP338 V2



COLOR: HP 42





Tamara

ART. 2164/6

SIZE: 36-42



COLOR: LAQ 734



COLOR: HP 314



COLOR: HP 280



COLOR: HP 292



COLOR: HP 298



COLOR: HP 42



COLOR: CTO 26



COLOR: CTO 42



Dr. Feet
anatomic

ART. 2127S

SIZE: 36-42



COLOR: WHITE



COLOR: NAVY

ART. 2127/6

SIZE: 36-42



COLOR: CTO 25



COLOR: HP 314



COLOR: HP 280



COLOR: CTO 85



COLOR: HP 298



COLOR: HP 42



COLOR: CTO 26



COLOR: CTO 42

ART. 2416/6

SIZE: 36-42



COLOR: CTO 85



COLOR: HP 338 V3



COLOR: HP 280



COLOR: HP 314



COLOR: HP 298



COLOR: HP 42



COLOR: CTO 26



COLOR: HP ZEBRINA

ART. 2025

SIZE: 36-42

REMOVABLE FOOTBED

MEN SIZES AVAILABLE



COLOR: RED



COLOR: WHITE



COLOR: BLACK



Jasna

ART. 2111/20

SIZE: 36-42



COLOR: WHITE



COLOR: GREY



COLOR: RED



COLOR: NAVY

ART. 2259/6

SIZE: 36-42



COLOR: HP 42



COLOR: HP 314



COLOR: CTO 26



COLOR: HP 280



COLOR: HP 298



COLOR: CTO 41



COLOR: LAQ 484

ART. 2111/6

SIZE: 36-42



COLOR: HP 280



COLOR: HP 338 V4



COLOR: HP 314



COLOR: HP 292



COLOR: HP 298



COLOR: HP 42



COLOR: CTO 26



COLOR: CTO 42



ART. 2471/6

SIZE: 36-42



COLOR: HP 292



COLOR: CTO 42



COLOR: HP 280



COLOR: HP 314



COLOR: HP 298



COLOR: HP 42

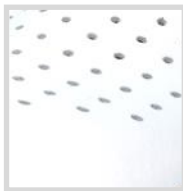


COLOR: CTO 26



COLOR: HP 338 V4





WHITE



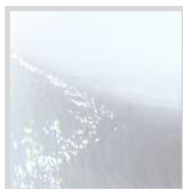
RED



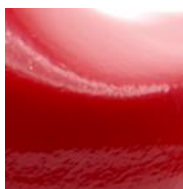
NAVY



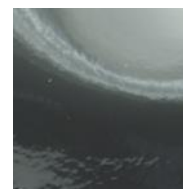
BLACK



VERNICE WHITE



VERNICE RED



VERNICE GREY



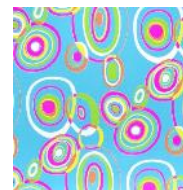
VERNICE NAVY



HP 42



HP 048 B



HP 048 C



LAQ 348



CTO 25



CTO 26



CTO 41



CTO 42



HP 280



HP 292



HP 298



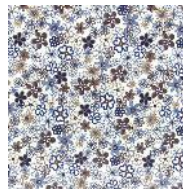
HP 314



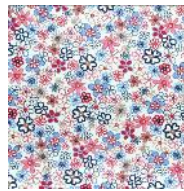
CTO 85



HP338 V2



HP338 V3



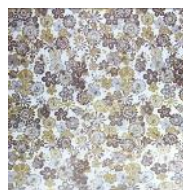
HP338 V4



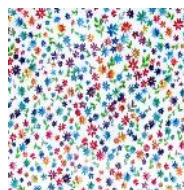
LAQ 484



LAQ 733



LAQ 734



LAQ 445



Seklo d.o.o.
Bili Brig 3
35410 Nova Kapela
Croatia

tel.: +385 (0)35/346-650

fax.: +385 (0)35/346-651

seklo@seklo.hr

www.seklo.hr

